



DNA from Saliva

EASY • PAINLESS • PROVEN

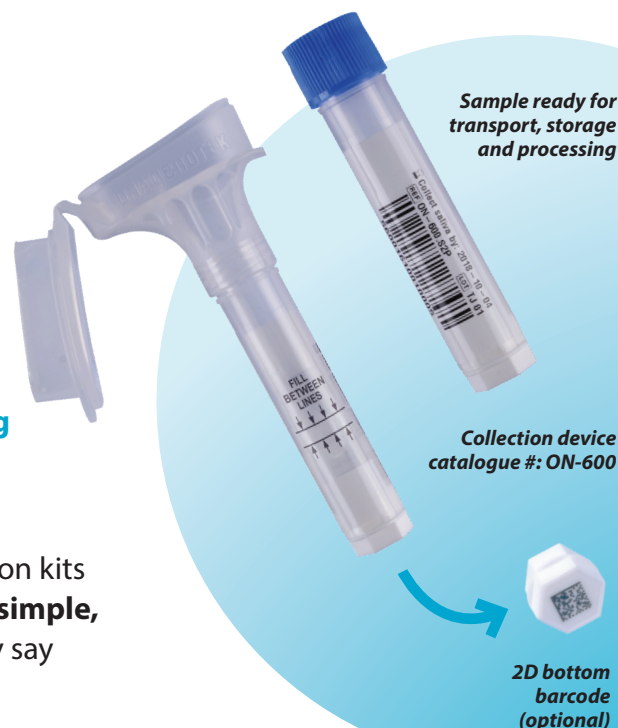
Ultimate flexibility for your genetic test

Reliably collect DNA at-home or in the clinic with Oragene®•ONE, the proven, patient-friendly all-in-one system to collect, stabilize and transport DNA from saliva that performs equivalent to blood for DNA testing.

- **Fast and painless self-collection**
- **Equivalent to blood for DNA testing**
- **Long term DNA stability at ambient temperature**
- **Optimized for both manual sample processing and automated workflows**
- **Integrated 1D barcode + optional 2D bottom barcode for workflow efficiency**
- **Proven on targeted and whole genome sequencing**

"DNA Genotek, Inc. makes the outstanding saliva collection kits we use everyday – their products **make genetic testing simple, safe and non-invasive** (because of them we can proudly say "no blood and no needles!!")."

Dr. Brandon Colby, MD
Existence Health



For In Vitro Diagnostic Use



For collection of human DNA

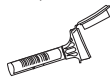


DNA Genotek Inc.
3000 - 500 Palladium Drive
Ottawa, ON, Canada K2V 1C2
Subsidiary of OraSure Technologies, Inc.

Toll-free (North America): 1.866.813.6354
Tel.: +1.613.723.5757 • Fax: +1.613.723.5057
www.dnagenotek.com
info@dnagenotek.com

DNA genotek

Your kit, your way.

The Oragene-ONE 600 combines ease-of-use and high quality samples with the ability to tailor the device to your needs. Tube length, anti-rotation features for automation and enhanced barcoding options give you ultimate flexibility for storage, sample processing and traceability. GenoFIND™ services are available to supplement your sample management needs.

Sample size	Recommended configuration	Laboratory advantages	Collection, transport and storage advantages	Supplemental services
Small to mid-size study 	Standard 600 kit with 1D tube barcode	<ul style="list-style-type: none"> Compatible with manual processing Automated de-capping (low-medium throughput) Sample tracking with 1D tube barcode 	<ul style="list-style-type: none"> Non-invasive At home or centralized collection Instructions available in multiple languages Ship via standard postal system 	<ul style="list-style-type: none"> Custom sample packaging for brand awareness Complete fulfillment capability Regulatory guidance Mailing accessories Wet lab services in a GLP/CLIA accredited lab
Large-size study 	Standard 600 kit • 1D tube barcode • Optional matching 2D bottom barcode†	<ul style="list-style-type: none"> Automated de-capping (high-throughput) Sample tracking with option for bed scanning 	<ul style="list-style-type: none"> No cold chain required Compact design minimizes storage space 	<div>  <p>GENOFIND™ Services Superior support, analysis and reporting</p> </div>

† No false bottom on configurations with 2D bottom barcodes

Kit contents and packaging specifications

Dimensions: 14.0 x 7.5 x 2.8 cm

Weight: 36 g

Shelf-life: 30 months



Performance data

Attributes	ON-600 for self-collection
Saliva volume	0.5 mL
Median DNA yield*	12 µg ^{††}
Molecular weight	>23 kb
Low bacterial content	7.4% ^{††}
Sample stability at ambient temperature	Months

* Expected yield is dependent on donor draw volume and chosen extraction method.

†† Iwaszow, R.M., Tayeb, M.A. and James, C.M.P. (2009). Quality, yield and bacterial content of DNA from human saliva collected and purified using Oragene-ONE. DNA Genotek. PD-WP-013.

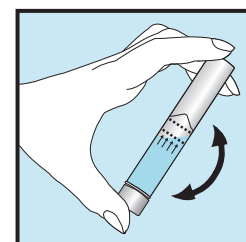
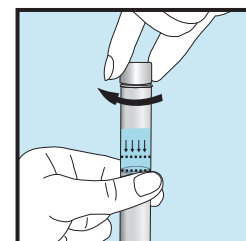
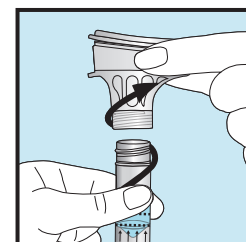
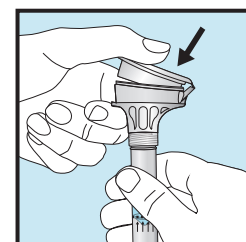
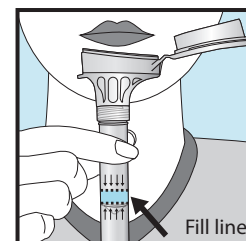
Oragene-ONE is not available for sale in the United States.

Some DNA Genotek products may not be available in all geographic regions.

*Oragene is a registered trademark, and GenoFIND is a trademark of DNA Genotek Inc.

All other brands and names contained herein are the property of their respective owners. Patent (www.dnagenotek.com/legalnotices)

Self-collection



Full collection instructions can be found on our website.